



AUBURN - Lea Hill
BONNEY LAKE - at Tehaleh
DES MOINES
PUYALLUP - Bradley Park
WesleyChoice.org/WesleyU

LIFELONG LEARNING COURSE CATALOG | FALL 2022



Growing Up Behind Barbed Wire. Des Moines

**Please register in advance for each class
so we can send you the appropriate link and details.**

See page 2 for registration instructions.

Wesley U courses are **FREE** for
residents and community members
thanks to our sponsor:



Thank you to the **Wesley U Resident Committee** and staff for planning the Wesley U program.

Wesley Bradley Park - Puyallup

A J Culver
Liz Carter
Marilyn Knutson
Leslie Winchell
Mistie Hansen, staff

Wesley Des Moines

Rita Bailie
Diane Collier
Paul Cooke
Gene Haugen
Sue Lawrence
Verla Morrison
Nancy Robertson

Wesley Lea Hill - Auburn

Helena Hanna
Barbara Dadd Shaffer
Elaine Stamm
Marlene Feliciano, staff

Wesley at Tehaleh - Bonney Lake

Karen McClure
Barbara Toren
Erica Hack, staff

WesleyChoice.org

Wesley is a non-profit organization offering a full spectrum of lifestyle options for aging well, including residential communities, in-home health and care services in King and Pierce counties.



Welcome to Wesley U

Wesley U classes stimulate meaningful learning, interaction, and personal growth for Wesley Homes residents and our neighboring communities.

Wesley U courses are available in a variety of formats:



In-person Speaker

Rotating Wesley locations host the instructor in-person. Other Wesley locations participate via Zoom.



Zoom In

Join a Zoom class from your computer, tablet or smartphone. Prior to each class, you'll receive an email reminder with the Zoom link and class information.



Small Group

You can also participate in the Zoom class with other residents in the room as stated on the course page.

PLEASE REGISTER IN ADVANCE

BEST WAY: ONLINE

WesleyChoice.org/WesleyU

EMAIL

Scan registration page or send your list of classes to **kburrows@wesleyhomes.org**

PHONE

Call Wesley U Manager: **(206) 870-1385**

DROP OFF

Complete the **inserted registration form** and return it to your Front Desk.



WESLEY

Community · Choice · Continuing Care

COURSE DESCRIPTIONS

Musical Mashup: Tin Pan, Country and The Blues

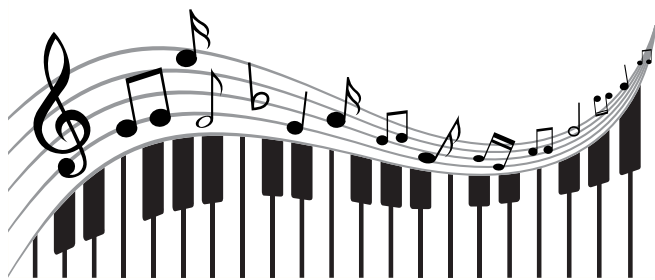
Des Moines • Wednesday, September 7 • 1:00-2:00pm

Lea Hill • Thursday, September 15 • 2:00-3:00pm

Bradley Park • Thursday, September 22 • 3:00-4:00pm

Tehaleh • Monday, October 10 • 1:00-2:00pm

Performer and popular music scholar Dr. David Joyner will join us again to present a delightful assortment of music defined as uniquely American. He'll provide a media-rich



lecture of the early musicians and song-writers who helped define the genres of Tin Pan, country, and the blues, paired with his own piano/vocal performance of songs that exemplify these genres. Playing to full rooms the last time he was here, feel free to arrive a little early to these performances to claim a good seat.



ABOUT THE INSTRUCTOR

Dr. David Joyner is an in-demand pianist, composer, vocalist, and educator. David was an Associate Professor of Jazz Studies at the University of North Texas in Denton and then a Professor of Music at Pacific Lutheran University in Tacoma. He has a B.A. in composition, an M.A. in composition from the

University of Cincinnati College-Conservatory of Music, and a Ph.D. in ethnomusicology from the University of Memphis. David has performed and lectured all over the world and has backed up such celebrities as Bob Hope, Henry Mancini, Rich Little, and Danny Thomas. A scholar in jazz and popular music, he has numerous published articles and books, including a chapter for *The Cambridge History of American Music* and the third edition of his history text *American Popular Music*. He's just completed a biography of rock 'n roll pioneer Bill Haley, commissioned by the Haley estate. David also serves on the board of directors for Pacific Public Media that includes radio station KNKX in Seattle and Tacoma.

Watercolor Painting. Four-part Series

Lea Hill, Assembly Hall • Thursdays, September 8, 15, 22, 29 • 10:00am-Noon

Tehaleah, Creativity Center • Fridays, September 9, 16, 23, 30 • 1:00-3:00pm

Bradley Park, Activities Room • Mondays, October 3, 10, 17, 24 • 10:00am-Noon

Des Moines, Gardens Club Room • Tuesdays, October 4, 11, 18, 25 • 10:00am-Noon

Each class is limited to 12 participants. Please register early.

Fall Watercolor Painting is for everyone who wants to give watercolor a try. We'll focus on the beginner, and still offer some growth in skills for those more experienced. In each class you'll complete a painting based on a traced image - no need to know how to draw. Each seasonal painting will feature specific watercolor techniques to develop and enhance your skills.

Paper is provided for each project. If you are new to watercolor and need supplies, there is a supply list available - or a kit can be purchased with at least one week notice please. The kit is \$75 (her cost) and has everything you need. This kit will last for years. After registration is confirmed you may contact Charlene for the kit at charlene.burley@gmail.com.



ABOUT THE INSTRUCTOR

Charlene Burley has been painting in watercolor for more than 10 years.

She first took lessons from three great local instructors: Ann Breckon, Kay Barnes and Mary Gibbs.

She then expanded her classes to nationally known instructors, increasing her love of the medium. Charlene is a collective

member of the Art Gallery of Snovalley in Snoqualmie. She is a member of the Northwest Watercolor Society, the South Hill Artists and the Mount Si Artist Guild, creating her own watercolor works. She's been providing painting classes for Wesley Homes for many years and has a dedicated following. She is skilled at helping both beginner and experienced painters develop their skills in the same class.

Contemporary Ethics 1. Three-part series

Fridays, September 9, 16, 23 • 10:30-11:45am. LH and Zoom



In our increasingly contentious society, this class will help us pause and more clearly examine our system of ideas of what is right, and what is wrong. Dr. Smith will lead us in an overview of moral theories in circulation today, including relativism, divine command theory, egoism, utilitarianism, and deontology. We'll then see how these moral theories apply to current issues, including abortion and gun control, covering both the ethical and legal

aspects of each issue. He invites thoughtful and civil discussion as we all wrestle with important issues.



ABOUT THE INSTRUCTOR

Dr. David E. Smith grew up in the world of fundamentalist religion. As an adult he gradually moved away from that paradigm and became a religious progressive/skeptic. After earning an M.A. in philosophy of religion, he received a second M.A. and a Ph.D. in religious studies from Temple

University in Philadelphia, PA. Formerly a full-time faculty member at Central Washington University in Ellensburg, WA, he now teaches for the Osher Lifelong Learning Institute at the University of Washington and offers independent seminars and non-credit courses in comparative religion and philosophy. He has also published widely in these areas.

The Unity And Oneness of the Bahá'í Faith

Friday, September 30 • 10:30-11:30am • Zoom

In our quest to learn more about the world's religions and faiths, this class will give us an overview of the Baha'i faith. The Baha'i Faith is established in more than 100,000 localities in virtually every country and territory around the world. We'll explore the universal themes of one's relationship with religion, the community and society, science and education, and justice in human endeavors. Mr. Dale Eng invites your questions.



Bahá'í Faith



ABOUT THE INSTRUCTOR

*Born in Seattle and raised in Hawaii, **Dale Eng** has a very multicultural background. His mother was of European descent, his father was Chinese; he studied abroad where he met his wife Nahid who is Persian; their two sons were born in Taiwan. Dale joined the Bahá'í Faith in his teens, and for over three decades he and his wife volunteered in numerous Bahá'í development projects in the Philippines, Taiwan, Korea, Japan, Australia, Macau, Canada, and China. Dale wrote two books on the teachings of the Bahá'í Faith, and has spoken at numerous gatherings on the Bahá'í way of life which seeks to promote understanding of the oneness of the human family. Dale has an M.A. in educational administration from the University of Washington. Professionally he's worked as a technical writer for telecom firms in the U.S., as head of public relations for an Australian community college, as co-director of a bilingual international school in Macau, and as director of development for an international Bahá'í school in Canada. With his wife he's owned a language school in Taiwan.*



Analysis of the 2022 Midterm Elections

Two-part Series + Commentary

1. Pre-Election: Who Is Who on the Ballot? What Is at Stake?

Wednesday, October 5 • 2:00-3:00pm • Zoom

2022's mid-term elections are getting a lot more attention than most - with the composition of the Federal House of Representatives and the Senate in a tight balance. Political ads on television, radio, mail, and social media are looking to be especially intense and contentious. In this session, Dr. Sell will provide a balanced-as-possible look at local and national political races, helping us to step back and take a national view of the upcoming mid-term elections by looking at who is running for which of the political races, especially those likely to attract the most media attention.

2. Post-Election: Summary Analysis of Who Won What

Monday, November 21 • 2:00-3:00pm • Zoom

During and following the mid-term election, we can expect all of the news media outlets to provide an overwhelming rush of reports, analysis, and commentary. After the major flurry of these programs, we may still need some time to step back and take a national view of the election results. In this session, Dr. Sell will guide us through who-won-what and the make-up of the national political map.



ABOUT THE INSTRUCTOR

T.M. Sell, Ph.D. is professor of political economy at Highline College. He has also taught at Central Washington University and at Shanghai Jiao Tong University in China. He has a B.A. from Western Washington University, an M.A. in public administration from The Evergreen State College, and a Ph.D. in political science from the University of Washington. He is a two-time winner of Washington Civic Educator of the Year. He is a past president of the Pacific Northwest Chapter of the Society of Professional Journalists and the Pacific Northwest Political Science Association. He is the author of two books, *Wings of Power: Boeing and the Politics of Growth in the Northwest*, and *An Introduction to Politics*. He is also a successful playwright. At Highline, he teaches courses in state and local government, American government, political theory, economics and journalism. His work has been published in the *Seattle Times*, *Washington Law and Politics*, *Crosscut*, and *Salon.com*.

Commentary on the Midterm Election

Friday, November 18. 2:00-3:30pm • **Lea Hill and Zoom**



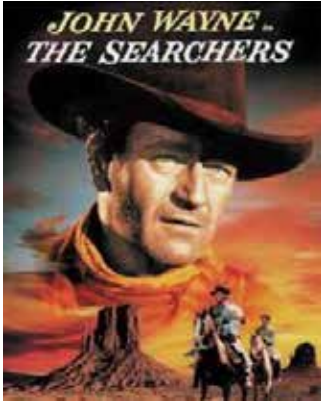
What part did the overturning of *Roe v. Wade*, inflation, the January 6th Special Committee hearings, and the war in Ukraine have upon the election? Was Bueno de Mesquita right in his book, *The Dictator's Handbook*, that elections in democracies are a competition for ideas – that the party that has the most appealing ideas wins?

Join Rich Elfers in his reflections and commentary on the impact of the 2022 midterm elections. We will look at the implications of who won and who lost in local, state, and national elections, and invite discussion on the impact of the recent mid-term and other elections on our representative democracy.



ABOUT THE INSTRUCTOR

Rich Elfers has an M.A. in history from Pepperdine University in California. He taught social studies for 31 years at Sumner High School. Rich taught U.S. History, Civics and Government for 15 years. He has traveled throughout the world, and served locally on the Enumclaw City Council for four years. He writes a political column for two small town newspapers and is a frequent speaker with Wesley U.



The Evolution of the American Western Film. Three-part Series + Films

Classes: Fridays, October 14, 21, 28 • 10:00-11:30am • Zoom
Film Screenings prior to each class at your site:

Lea Hill • Tuesdays, October 11, 18, 25 • 2:00-4:00pm

Tehaleh • Thursdays, October 6, 13, 20 • 11:00am-1:00pm

Des Moines • Thursdays, October 13, 20, 27 • 10:00am-noon.

Also, see Channel 370 schedule

**Bradley Park • Thursdays, October 13, 20 • 2:00-4:00pm,
 October 27, 9:30-11:00am.**

For this course, please view the film at your site prior to the classes.

The genre of the Western film has evolved, reflecting changing American values, culture, and our view of the land and its people. Dr. Thompson will discuss the common themes of the American western film, including the conquest of the Wild West, the cultural separation of the East and the West, the West's resistance to modern change, the ownership of land, and the conflict between cowboys and Indians, outlaws and treasure seekers. She will provide insightful analysis of the genre using the following films as examples: "The Searchers" (1956), "The Tin Star" (1957) and "Unforgiven" (1992).



ABOUT THE INSTRUCTOR

Dr. Kirsten Moana Thompson is the Professor of Film and Media Studies and Director of Film and Media at Seattle University. She teaches and writes on American, German, and New Zealand film and media, as well as animation and color studies. Recent work focuses on the content color history of Disney; animated advertising in Times Square; and the Disney animated promotional film. She is the author of *Animation and Advertising* (co-ed. with M. Cook, Palgrave, 2019); *Apocalyptic Dread: American Cinema at the Turn of the Millennium* (SUNY, 2007); *Crime Films: Investigating the Scene* (Wallflower: 2007), and *Perspectives on German Cinema* (co-ed. with Terri Ginsberg GK Hall: NY, 1996). She is currently working on three other books, *Color, Visual Culture and American Cel Animation*; *Bubbles*; and *Animated America: Intermedial Promotion*.

Anti-Semitism - What Does it Look Like Now?

Monday, October 24 • 10:00-11:00am • Zoom

Recent national events remind us that violence and anti-Semitism are still with us. Historically and presently, what is the scope of anti-Semitism in the world, the United States, and in our Pacific Northwest? What terms and language can we use to even speak about this issue in civil discourse, and in legislative, political, and grass roots efforts in addressing the issue?



What are some recent events that members of our community have experienced, and what are we compelled to learn from them? How do they relate to all members of our community? Can we recognize what anti-Semitism looks like in our current social and political world so we may recognize it when we see it? What positive actions might we take?



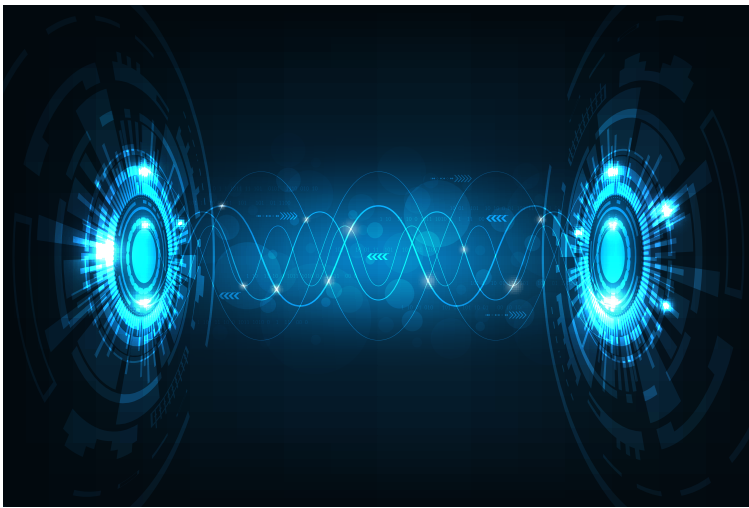
ABOUT THE INSTRUCTOR

Miri Cypers is an experienced nonprofit leader, strategist, and advocate. With a passion for advancing causes she cares about, she's worked with Congress and at various nonprofits tackling challenging issues like gun safety, domestic violence, and civil rights. She has a talent for bringing people together and cultivating relationships with allied groups, donors, board members, and colleagues. She currently brings her skills and passion to the Anti-Defamation League where she's working to advance civil rights, social justice, and anti-discrimination efforts in the Pacific Northwest. Her degree is from Barnard College.

How Audio Technology Changed the World

Thursday, October 27 • 1:30-3:00pm • Zoom

Although we live in a visual world, audio still has the power to create intimacy and spark the imagination like no other medium can. Veteran broadcaster Ross Reynolds explores the impact that audio transmission has had on society and storytelling, from the beginning of radio to the modern age of audiobooks, internet streaming, podcasts and smart speakers. How has audio transmission changed society, and what makes it such a still powerful form of communication?



You'll be encouraged to share stories of your formative audio experiences, and local radio broadcasters. Podcasters will also be invited to share their stories.

Note: This program is brought to us through Humanities Washington. After the program, we'll send you a link to Humanities Washington's short evaluation form to kindly provide your feedback on the program.



ABOUT THE INSTRUCTOR

Ross Reynolds is an interviewer, moderator, and convener. He recently served as KUOW's Executive Producer for Community Engagement, prior to being a program host for 16 years. His awards include the 2011 Public Radio News Directors First Place in the call-in category for Living in a White City. In 2015, he was named to the University of Washington Communication Alumni Hall of Fame.



Profiles: Global Pacific Northwest Companies. Three-part Series

Tuesdays, November 1, 8, 15 • 10:30am-Noon • Zoom

The Pacific Northwest has given rise to companies that have grown to global status, becoming household names throughout the world. Professor Freeman will feature three of them: Amazon, Weyerhaeuser, and Starbucks. We'll learn of their founders and early days, and the ways in which they grew their products, their services, and their locations. We'll get the numbers on their current revenues, number of employees, and global impact. What may be next for these home-grown giant companies?



ABOUT THE INSTRUCTOR

Professor Shawna Freeman is currently the Interim Associate Dean for Student Learning & Success at Highline College as well as an experienced business professor teaching various courses in business, marketing, journalism, advertising, management, and business ethics. Born and raised in San Francisco, she earned a B.A. in Communications/Journalism and an M.B.A. in Business Administration from Augusta State University. She is currently completing a Doctorate of Education from Seattle University.

Dance and Culture. Three-part Series

Wednesdays, November 2, 9, 16 • 1:00-2:00pm • Zoom

Almost without exception, human societies have refined human movement patterns into something called 'dance.' What those dances look like and what they mean varies widely across geographical region, historical time period, and social milieu. This course explores the notion of dance as a local cultural practice, shaped by the culture/s from which it has risen and is



embedded. Drawing on the disciplines of anthropology, dance history, and sociology, we'll explore three case studies (theatrical dance/ballet, social dance/hip hop and krumping, and folk dance/Morris dancing) to discuss how a culture can be understood through its dances, and how a dance can be better understood if we know a little about its context. In the process of viewing, describing and debating these dance forms, we'll build a set of tools for better understanding the rich variety of dances humans enjoy worldwide.



ABOUT THE INSTRUCTOR

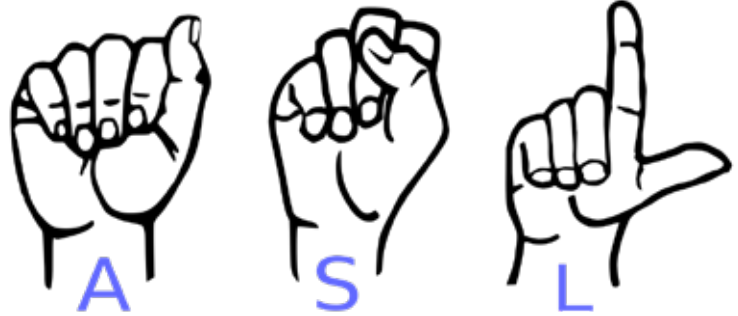
Victoria Watts holds a Ph.D. in Cultural Studies from George Mason University and an M.F.A. in Dance (with a concentration in Technology) from The Ohio State University. She is a dance educator, notator, scholar and activist whose professional engagements have spanned Europe, North

America, and Australia. Most recently, she served as Chair of the Dance Department at Cornish College of the Arts and has an ongoing professional relationship with the Royal Academy of Dance in London, where she supervises research students and provides practical teaching supervision for teachers seeking certification. She is most especially nerdy in relation to dance notation - the practice of transcribing dance in written form much as one might score a piece of orchestral music. She holds professional certifications to Advanced level in Labanotation, in Benesh Movement Notation, and was elected as a Fellow of the International Council of Kinetography Laban in 2015. She can be steered into enthusiastic discussions of this at the drop of a hat.

An Introduction to American Sign Language. Two-part Series

Mondays, November 7, 14 • 11:30am-12:15pm

Are you curious about American Sign Language (ASL)? Could it also be part of a solution to communicating with adults losing their hearing? Come find out more about this fascinating language and come away knowing how to sign some useful phrases. If you've been thinking about learning a new language, this one could be for you!



ABOUT THE INSTRUCTOR

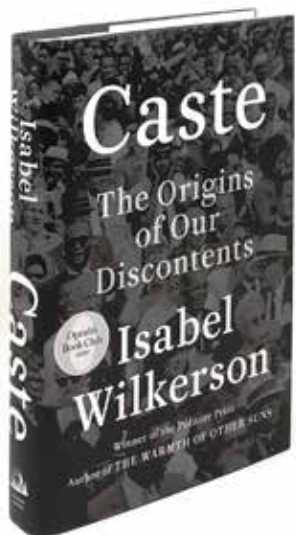
Erica Hack is the Resident Engagement Director at Wesley at Tehaleh.

Working with residents for the past several years has been the ultimate highlight of her life. The ASL course is very near and dear to her heart, having several family members who are hard of hearing. Erica wants to bring the same communication ability to current Wesley Homes' residents. "Being able to effectively communicate with residents has always been important to me. I want residents to benefit from that same opportunity to learn another language and to broaden their horizon with the ASL Community."

Erica has a professional background in Activities, Marketing, Dining and Concierge Services with seniors since 2017. Originally from Anaheim, California, Erica now considers Washington her forever home. Her hobbies include exploring and long distance drives, roller-skating, and spending quality time with her husband and two dogs.

Book Discussion: *Caste: The Origins of Our Discontents*. Two-part Series

Mondays, November 7, 14 • 2:00-3:30pm • Zoom



Dr. Jennifer Jones will lead us in a discussion of the book *Caste: The Origins of Our Discontents* by Isabel Wilkerson. This book explores the laws and practices, particularly in the American South but throughout the country, towards the Black, indigenous, and other populations. We'll learn how these laws and practices provided a model for Germany's pre-World War II policies towards the Jewish population. We'll review the author's "Eight Pillars of Caste" and their consequences, and become aware of the current national movements related to these pillars.

For this course, we recommend you read the book *Caste: The Origins of our Discontents* by Isabel Wilkerson prior to the class. But please join this discussion even if you don't - it will be interesting and enlightening in either case.

About the book author: Isabel Wilkerson is a winner of the Pulitzer Prize and the National Humanities Medal, and author of the critically acclaimed New York Times bestseller *The Warmth of Other Suns*. This, her debut work, won the National Book Critics Circle Award for Nonfiction. She was named to *Time's* 10 Best Nonfiction Books of the 2010s and *The New York Times* list of the Best Nonfiction of All Time. Wilkerson has taught at Princeton, Emory, and Boston universities. She has lectured at more than two hundred other colleges and universities across the United States and in Europe and Asia.



ABOUT THE INSTRUCTOR

Jennifer Jones Ph.D. teaches courses on world regional geography, colonialism, the Middle East, and social policy at Highline College. A Chicago native, Dr. Jones earned her undergraduate degree in political science at Carleton College in Minnesota, a Master's in public policy at the University of Chicago, and a Doctorate in geography at the University of California, Berkeley. She served as a Peace Corps volunteer in Congo and the Dominican Republic. She is a frequent speaker with Wesley U.

September 2022

Monday	Tuesday	Wednesday	Thursday	Friday
			1	2
5 LABOR DAY	6	7 <input type="checkbox"/> 1:00pm Musical Mashup - DM	8 <input type="checkbox"/> 10:00am Watercolor - LH	9 <input type="checkbox"/> 10:30am Contemporary Ethics - LH, Z <input type="checkbox"/> 1:00pm Watercolor - TH
12	13	14	15 <input type="checkbox"/> 10:00am Watercolor - LH <input type="checkbox"/> 2:00pm Musical Mashup - LH	16 <input type="checkbox"/> 10:30am Contemporary Ethics - LH, Z <input type="checkbox"/> 1:00pm Watercolor - TH
19	20	21	22 <input type="checkbox"/> 10:00am Watercolor - LH <input type="checkbox"/> 3:00pm Musical Mashup - BP	23 <input type="checkbox"/> 10:30am Contemporary Ethics - LH, Z <input type="checkbox"/> 1:00pm Watercolor - TH
26	27	28	29 <input type="checkbox"/> 10:00am Watercolor - LH	30 <input type="checkbox"/> 10:30am Baha'i Faith - Z <input type="checkbox"/> 1:00pm Watercolor - TH

BP: Bradley Park **DM:** Des Moines **LH:** Lea Hill **TH:** at Tehaleh **Z:** Zoom

October 2022

Monday	Tuesday	Wednesday	Thursday	Friday
3 <input type="checkbox"/> 10:00am Watercolor - BP	4 <input type="checkbox"/> 10:00am Watercolor - DM	5 <input type="checkbox"/> 2:00pm Mid-term Elections: Ballot - Z	6 <input type="checkbox"/> 11:00am (Film) The Searchers - TH	7
10 <input type="checkbox"/> 10:00am Watercolor - BP <input type="checkbox"/> 1:00pm Musical Mashup - TH	11 <input type="checkbox"/> 10:00am Watercolor - DM <input type="checkbox"/> 2:00pm (Film) The Searchers - LH	12	13 <input type="checkbox"/> 10:00am (Film) The Searchers - DM <input type="checkbox"/> 11:00am (Film) Tin Star - TH <input type="checkbox"/> 2:00pm (Film) The Searchers - BP	14 <input type="checkbox"/> 10:00am The Evolution of Western Film - Z
17 <input type="checkbox"/> 10:00am Watercolor - BP	18 <input type="checkbox"/> 10:00am Watercolor - DM <input type="checkbox"/> 2:00pm (Film) Tin Star - LH	19	20 <input type="checkbox"/> 10:00am (Film) Tin Star - DM <input type="checkbox"/> 11:00am (Film) Unforgiven - TH <input type="checkbox"/> 2:00pm (Film) Tin Star - BP	21 <input type="checkbox"/> 10:00am The Evolution of Western Film - Z
24 <input type="checkbox"/> 10:00am Watercolor - BP <input type="checkbox"/> 10:00am Semitism - Z	25 <input type="checkbox"/> 10:00am Watercolor - DM <input type="checkbox"/> 2:00pm (Film) Unforgiven - LH	26	27 <input type="checkbox"/> 9:30am (Film) Unforgiven - BP <input type="checkbox"/> 10:00am Unforgiven - DM <input type="checkbox"/> 1:30pm Audio Tech - Z	28 <input type="checkbox"/> 10:00am The Evolution of Western Film - Z

BP: Bradley Park **DM:** Des Moines **LH:** Lea Hill **TH:** at Tehaleh **Z:** Zoom

November 2022

Monday	Tuesday	Wednesday	Thursday	Friday
	1 <input type="checkbox"/> 10:30am Profiles of PNW Companies - Z	2 <input type="checkbox"/> 1:00pm Culture and Dance - Z	3	4
7 <input type="checkbox"/> 11:30am Intro to ASL - TH, Z <input type="checkbox"/> 2:00pm Book Discus- sion: <i>Caste</i> - Z	8 <input type="checkbox"/> 10:30am Profiles of PNW Companies - Z	9 <input type="checkbox"/> 1:00pm Culture and Dance - Z	10	11
14 <input type="checkbox"/> 11:30am Intro to ASL - TH, Z <input type="checkbox"/> 2:00pm Book Discus- sion: <i>Caste</i> - Z	15 <input type="checkbox"/> 10:30am Profiles of PNW Companies - Z	16 <input type="checkbox"/> 1:00pm Culture and Dance - Z	17	18 <input type="checkbox"/> 2:00pm Commentary Mid-term Elections - LH, Z
21 <input type="checkbox"/> 2:00pm Analysis of Mid-Term Elections - Z	22	23	24 THANKSGIVING	25
28	29	30		

BP: Bradley Park **DM:** Des Moines **LH:** Lea Hill **TH:** at Tehaleh **Z:** Zoom

You can participate in Wesley U classes a number of ways!

1. Over Zoom

- Online from your own device (computer, tablet, or phone) at home.
- With a small group at your Wesley campus:
 - **Bradley Park** in the Theatre
 - **Des Moines** in the Suzanne McCarthy Classroom (*Terrace Classroom*)
 - **Lea Hill** in the Assembly Hall
 - **At Tehaleh** in the Theatre

2. In-person with an on-site Instructor

Some classes will be delivered via an in-person instructor on one of our Wesley Homes campus's. These classes will also be on Zoom. See the course descriptions for which classes host an in-person class on a Wesley campus.

3. Watch a recording

Every class offered on Zoom will also be recorded. Everyone who registers for a class will be sent a link to the recording after the class even if you have to miss the class, or if you just want to watch it again.

See page 2 for registration instructions

Keep THIS COPY for your records • Use INSERTED FORM to register

Class locations unless otherwise noted: **BP:** Bradley Park, Theatre **LH:** Lea Hill, Assembly Hall
DM: Des Moines, S. McCarthy Classroom **TH:** at Tehaleh, Event Center

CLASS	DAY/DATE	TIME	LOCATION
Music Mashup: Tin Pan, Jazz & Blues			
<input type="checkbox"/> DM residents	Wed 9/7	1:00-2:00pm	DM
<input type="checkbox"/> LH residents	Thurs 9/15	2:00-3:00pm	LH
<input type="checkbox"/> BP residents	Thurs 9/22	3:00-4:00pm	BP
<input type="checkbox"/> TH residents	Mon 10/10	1:00-2:00pm	TH
Watercolor Painting			
<input type="checkbox"/> LH residents only	Thurs 9/8-29	10:00am-Noon	LH
<input type="checkbox"/> TH residents only	Fri 9/9-30	1:00-3:00pm	TH
<input type="checkbox"/> BP residents only	Mon 10/3-24	10:00am-Noon	BP
<input type="checkbox"/> DM residents only	Tues 10/4-25	10:00am-Noon	DM Club Room
Contemporary Ethics 1			
<input type="checkbox"/> Three-part Series	Fri 9/9-9/23	10:30-11:45am	LH, Zoom
Unity and Oneness of the Baha'i Faith			
<input type="checkbox"/> Single class	Fri 9/30	10:30-11:30am	Zoom
Mid-Term Elections			
<input type="checkbox"/> Who's Who? What's at Stake?	Wed 10/5	2:00-3:00pm	Zoom
<input type="checkbox"/> Post-election Analysis. Who Won?	Mon 11/21	2:00-3:00pm	Zoom
<input type="checkbox"/> Commentary on the Elections	Fri 11/18	2:00-3:30pm	LH, Zoom
The Evolution of the Western Film			
<input type="checkbox"/> Three-part Series	Fri 10/14-28	10:00-11:30am	Zoom
Film screenings (end times are approximate)			
<input type="checkbox"/> Tehaleh	Thurs 10/6-20	11:00am-1:00pm	TH Theatre
<input type="checkbox"/> Lea Hill	Tues 10/11-25	2:00-4:00pm	LH
<input type="checkbox"/> Bradley Park	Thurs 10/13-20	2:00-4:00pm	BP Theatre
	Thurs 10/27	9:30-11:45am	BP Theatre
<input type="checkbox"/> Des Moines	Thurs 10/13-27	10:00am-Noon	DM Theatre
Anti-Semitism: What Does it Look Like Now?			
<input type="checkbox"/> Single class	Mon 10/24	10-11:00am	Zoom
How Audio Technology Changed the World			
<input type="checkbox"/> Single class	Thurs 10/27	1:30-3:00pm	Zoom
Profiles of Global PNW Companies			
<input type="checkbox"/> Three-part Series	Tues 11/1-15	10:30am-Noon	Zoom
Dance and Culture			
<input type="checkbox"/> Three-part Series	Wed 11/2-16	1:00-2:00pm	Zoom
Introduction to American Sign Language (ASL)			
<input type="checkbox"/> Two-part Series	Mon 11/7-14	11:30am-12:15pm	Zoom
Book Discussion - "Caste" by Isabel Wilkerson			
<input type="checkbox"/> Two-part Series	Mon 11/7-14	2:00-3:30pm	Zoom